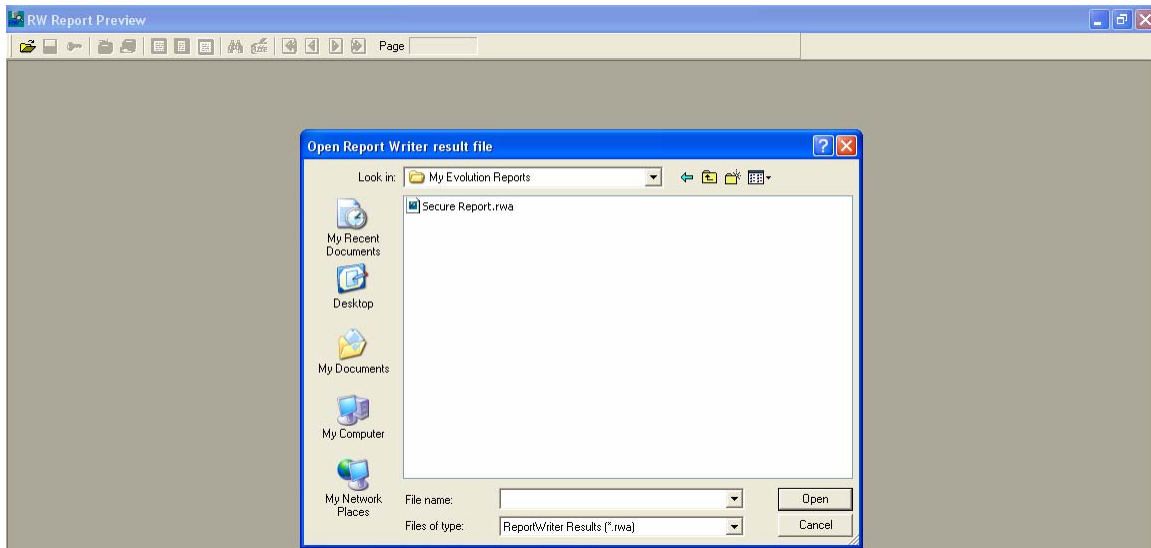


Evolution Secure Report Viewer

To preview the results of a report, first you would want to complete the following steps.

1. Click on rwpreview.exe
2. Browse to the appropriate .rwa file you would like to preview
3. Click the Open button

OR, double-clicking “.rwa” file emailed to you will open viewer after it has been initialized by following 1 – 3 above at least once.



Once the report has been opened, the following describes the functionality of the toolbar buttons within the program.



- **Open:** Opens a new file
- **Save:** Saves the current file
- **Security Options:** Allows you to password protect the file with one or more passwords
- **Quick Print:** Prints using standard settings
- **Print Property:** Allows you to select the appropriate printing properties for this particular print job
- **True Size:** Resizes the document to original size
- **Fit to Window:** Resizes the document to fit vertically within the window
- **Fit to Width:** Resizes the document to fit horizontally within the window
- **Search:** Allows you to search for a word, number or phrase within the current document
- **Marking On/Off:** Toggles ability to add notation mark up
- **First Page:** Navigates to the first page
- **Prev Page:** Navigates to the previous page
- **Next Page:** Navigates to the next page
- **Last Page:** Navigates to the last page